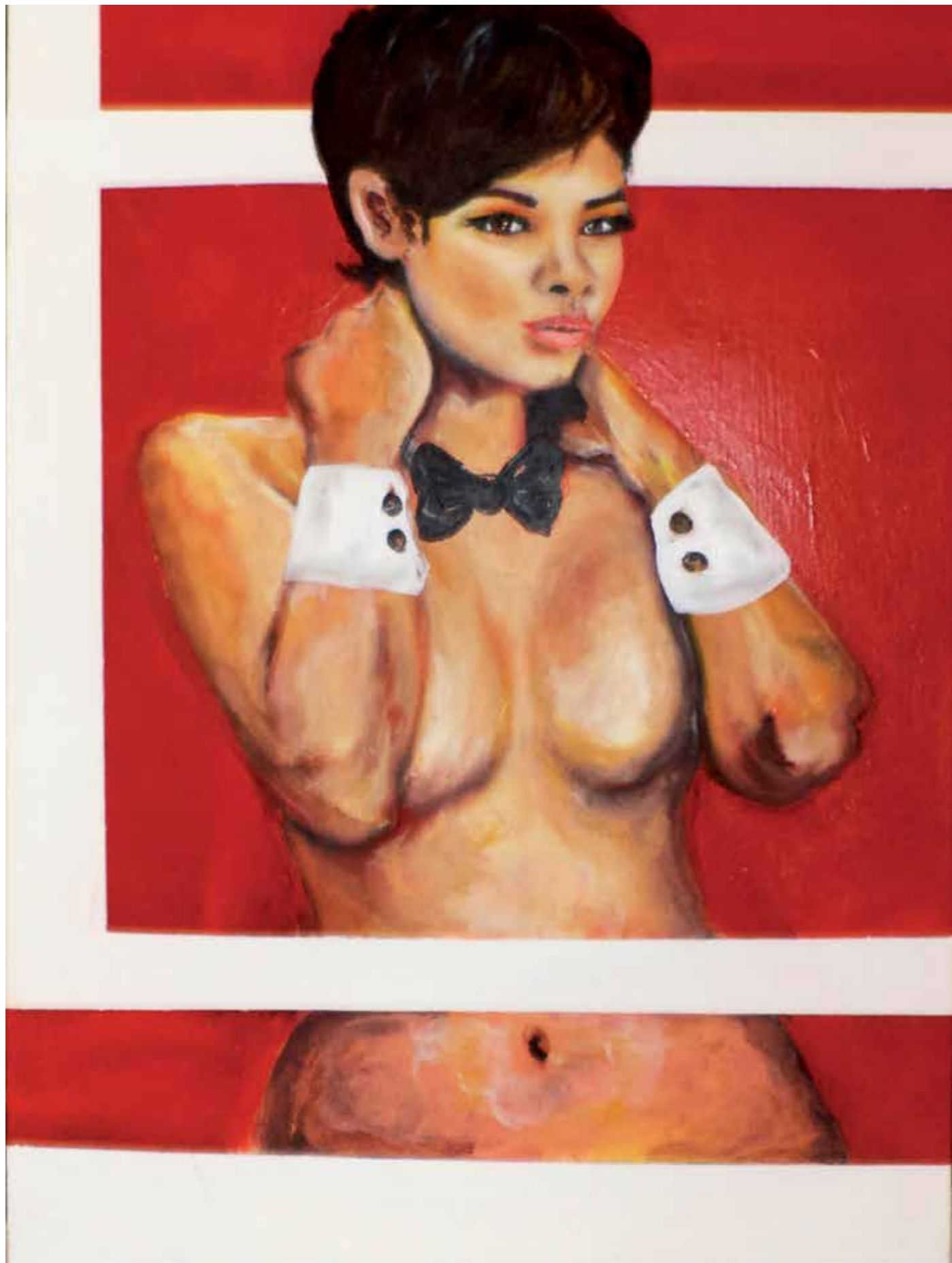


# Sexy Subjects

A solo exhibition by Kristina Rowe  
Blackcircle gallery exhibition at Hanover Grange

November the 8th to 15th 2013





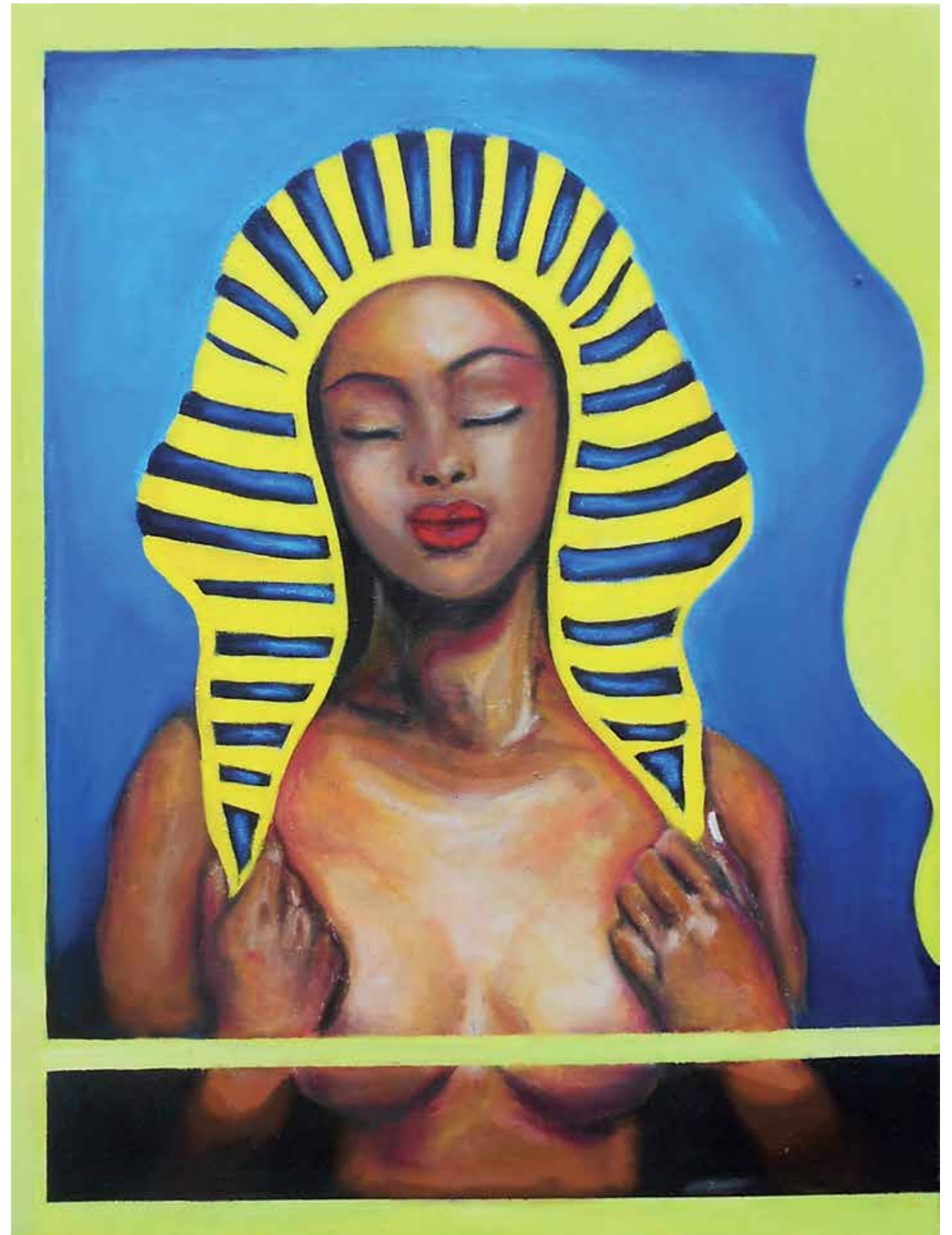
My Suit and Tie 24 1/2"x36 1/2"



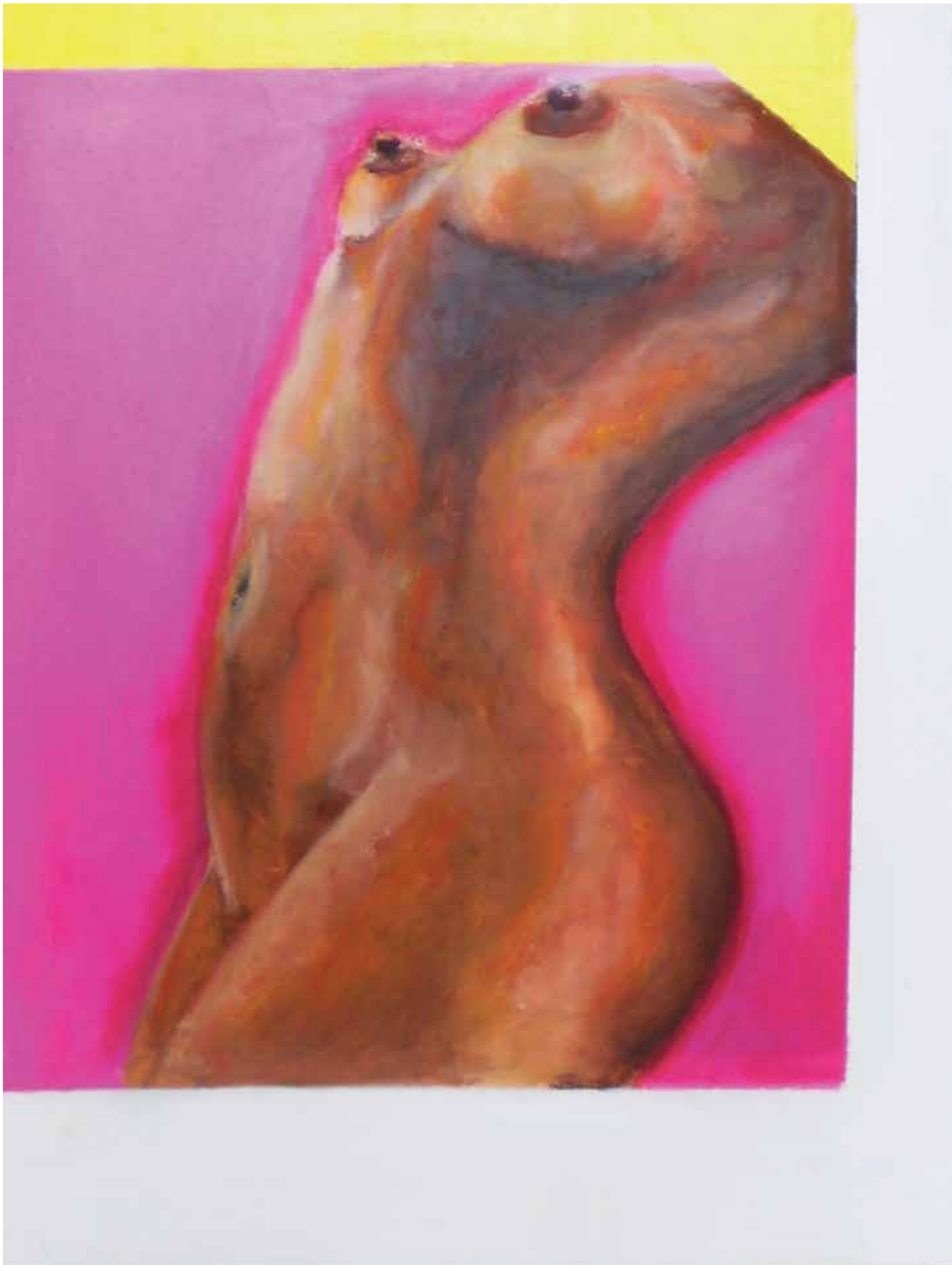
Lady with cloth 23"x 31"



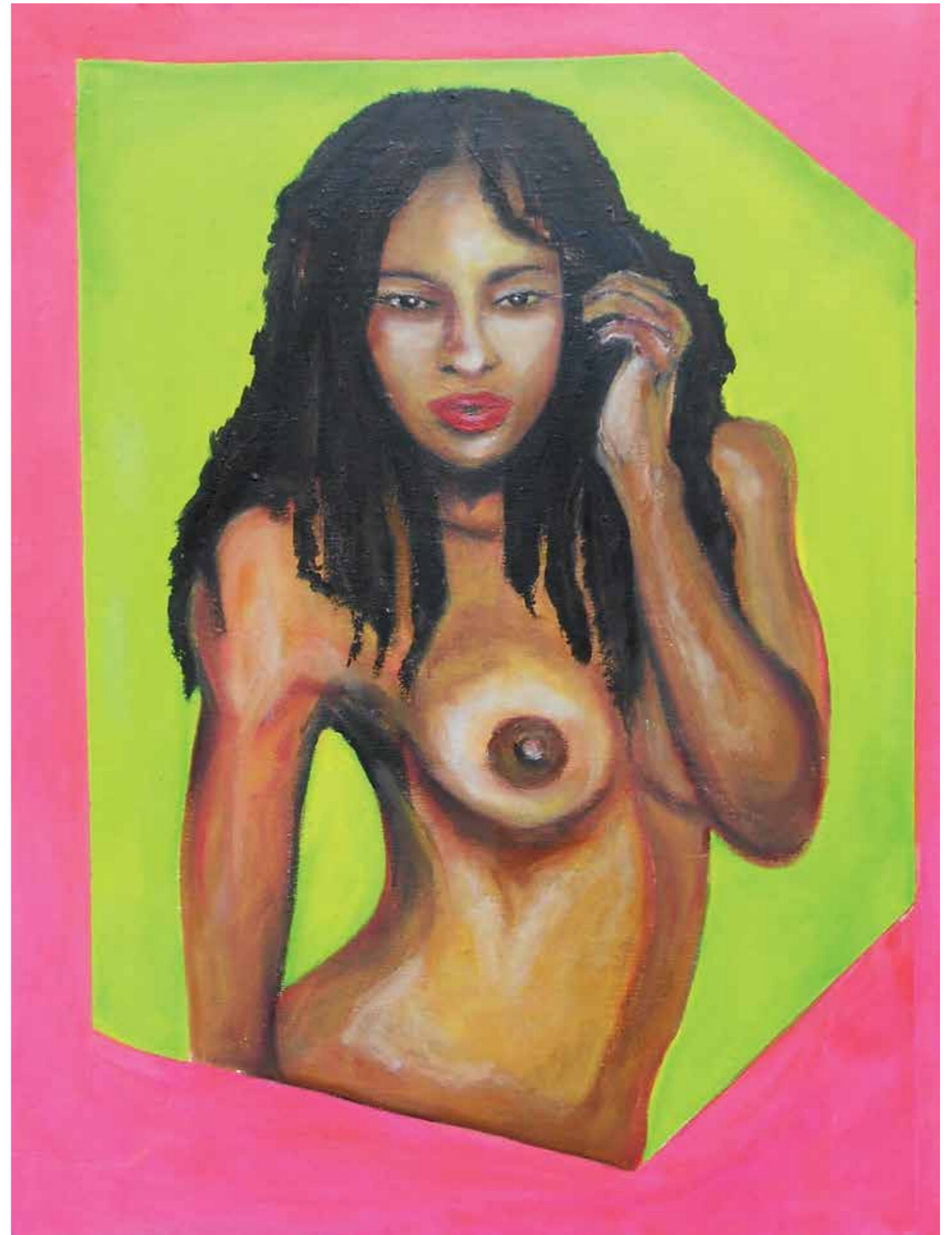
The unveil 18" x 24"



Empress' New Clothes 38"x 28 1/2"



Hills and valleys 18" x 24"



The Nipple Effect 30"x21 1/2"



Hanover  
Grange